




THE REPUBLIC OF TURKEY




A SIGNIFICANT ACTOR IN SECTOR:
GENERAL DIRECTORATE
OF LAND REGISTRY AND CADASTRE




168th YEAR

PRESENTATION OUTLINE


- BASIC INDICATORS OF TURKEY
- FUNDAMENTALS OF TKGM
- PAST AT A GLANCE
- A STRATEGY
- TODAY AND TOMORROW




168th YEAR




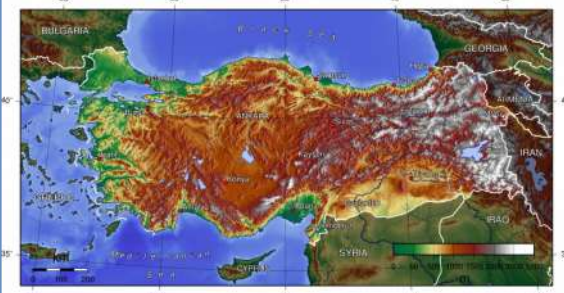
BASIC INDICATORS OF TURKEY



168th YEAR



TOPOGRAPHY




Turkey is situated in Anatolia and the Balkans.

Bridge between Europe and Asia.



The area is 783,563 km²

Population: 77,695,904 (18th)




168th YEAR

POLITICAL STRUCTURE



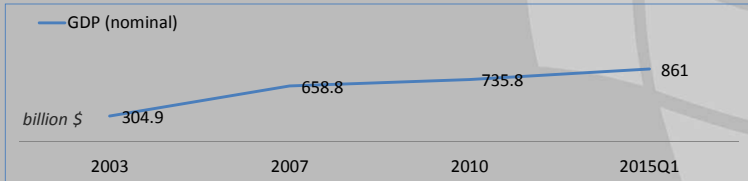

SOVEREIGNTY UNCONDITIONALLY BELONGS TO THE NATION

- Turkey is unitary parliamentary constitutional republic.
- System is based on a separation of powers.




168th YEAR

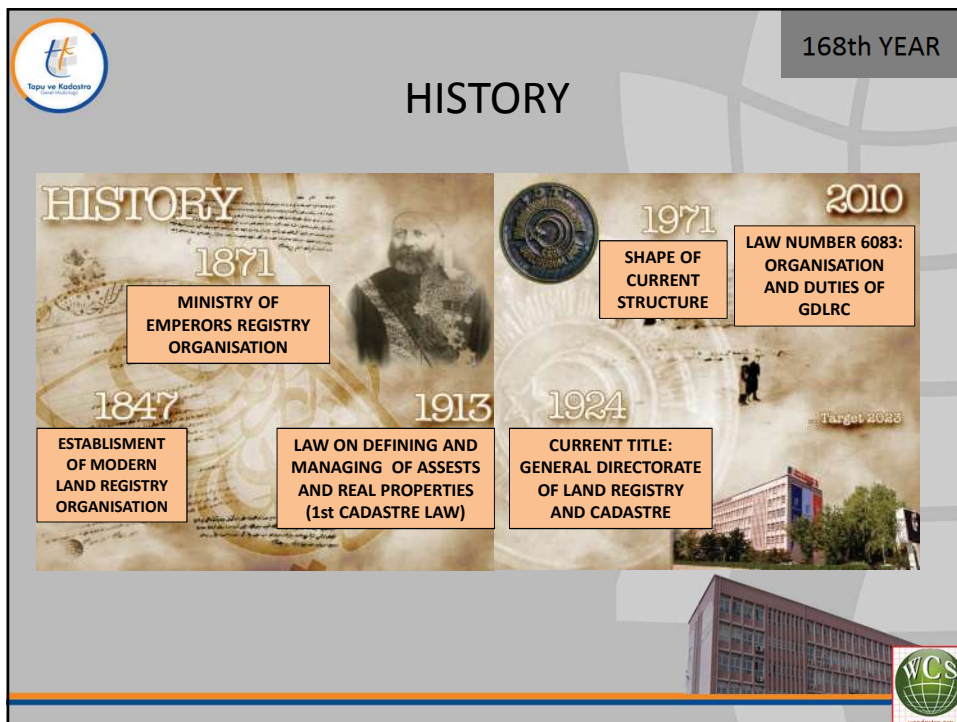
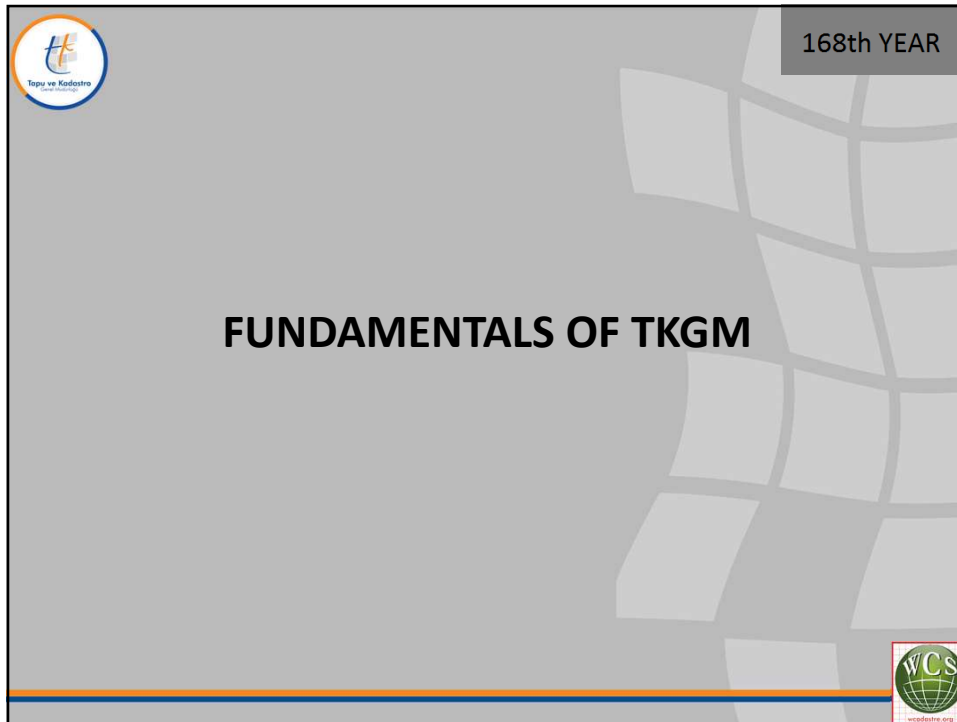
ECONOMY

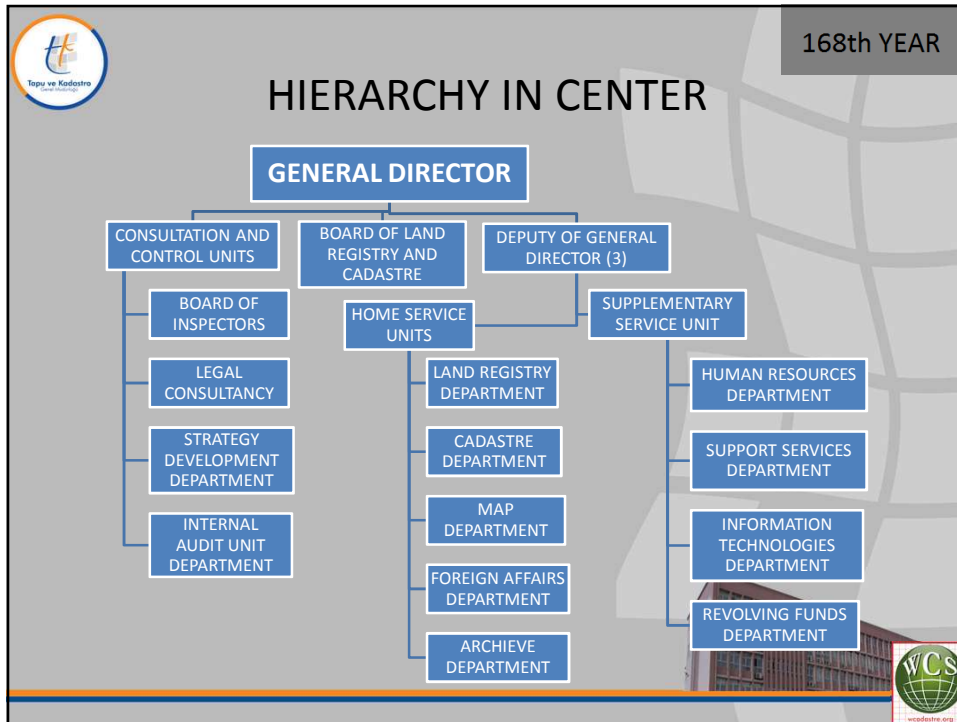


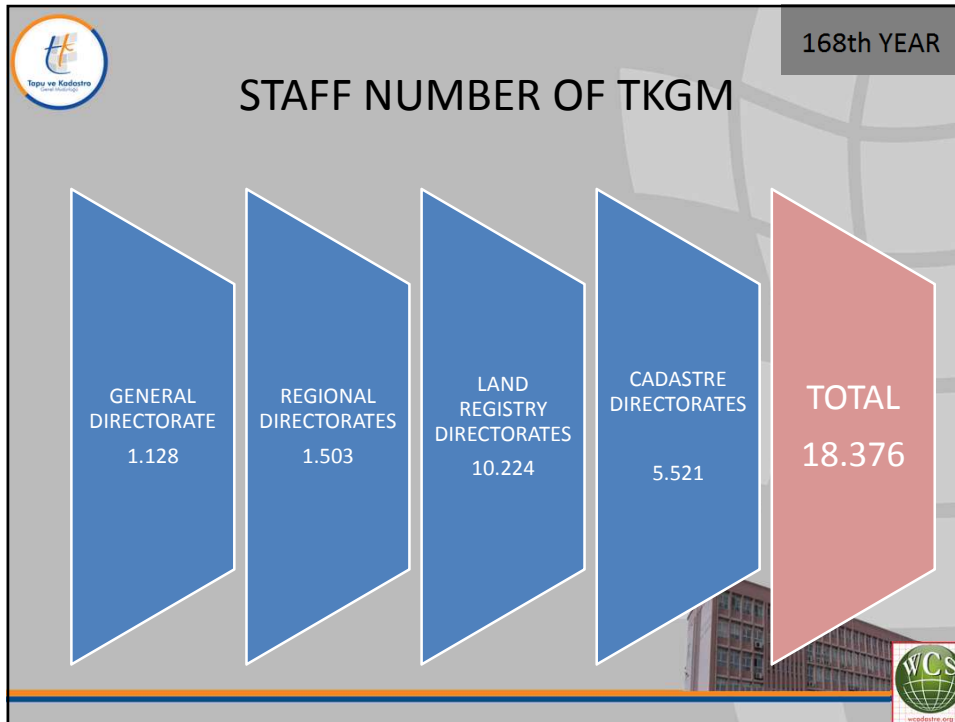
Year	GDP (nominal) (billion \$)
2003	304.9
2007	658.8
2010	735.8
2015Q1	861

- Currency: Turkish Lira (~\$0.38)
- GDP Per Capita: \$11,277
- GDP Growth : 4% (2014)
- Inflation rate: 8.2% (2014)

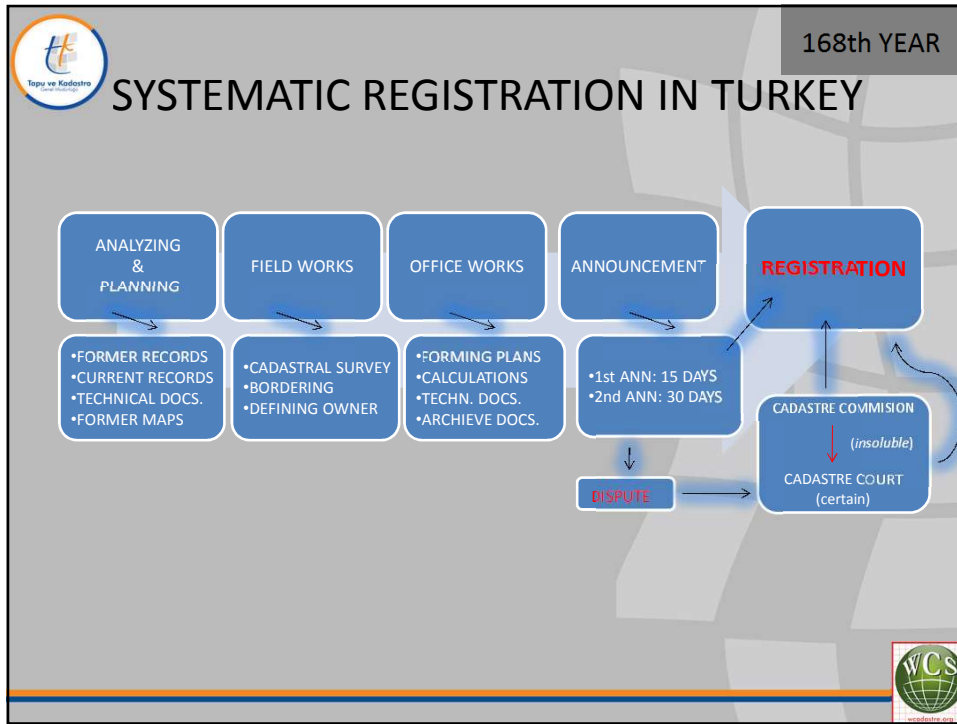


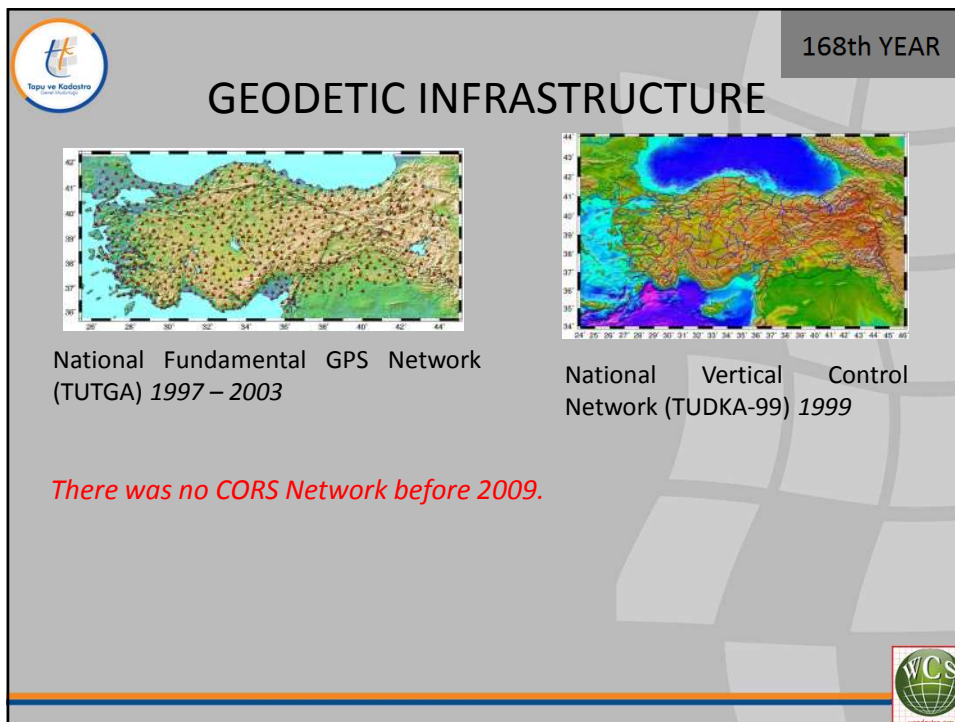
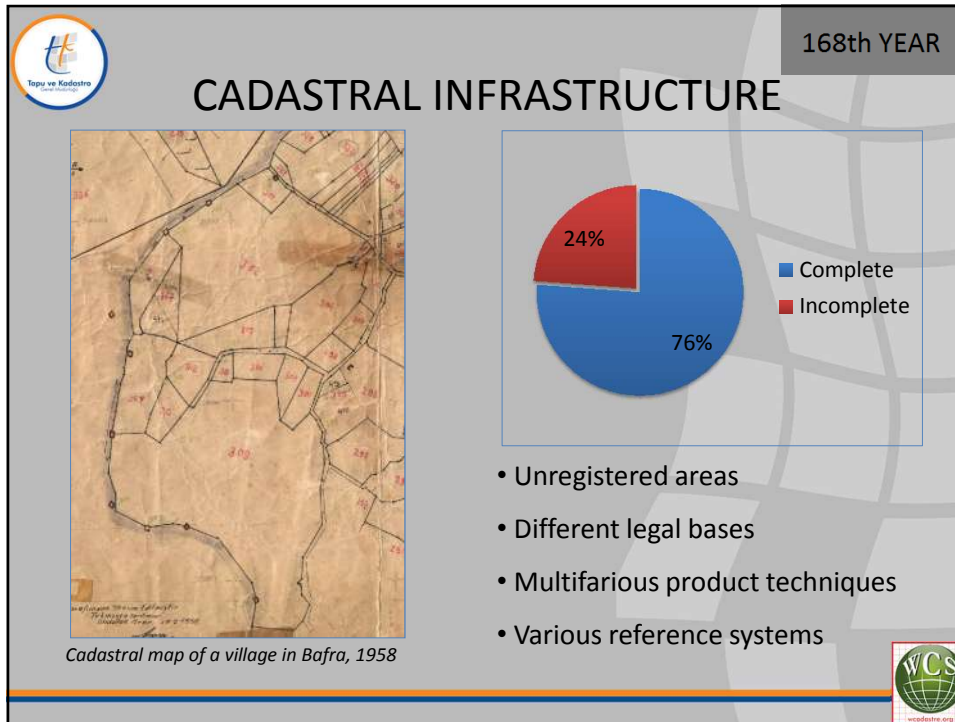






-
- 168th YEAR
- ### DUTIES & AUTHORIZATION
- Record, update and service of land register
 - Cadastre of Homeland
 - Photogrammetric and geodetic map production
 - Land information system
 - Cooperation with international organisations on issues related area of responsibility
- TKGM Logo: Topu ve Kadastro Genel Müdürlüğü
- WCS Logo: World Cadastre Summit





168th YEAR

TECHNOLOGIC INFRASTRUCTURE

- TKGM designed *IS* which is called TAKBIS in 2000.
- System mostly focused on land registry model, works on cadastral system were insufficient.
- Insufficant electronic environment conformance.

Unit integration in 2000-2005

Category	Percentage
Active	1%
Inactive	99%

WCS


168th YEAR

A STRATEGY

11 YEARS OF SUCCESS
between 2003 – 2013

WCS

168th YEAR




At the beginning of 2003; TKGM made a strategic plan, in line with **Turkey 8th Development Plan**, which include:

- Completion and renovation of Homeland cadastre
- Modernization of land registry services
- Refining IT Systems
- Improvement of services
- Photogrammetric works



168th YEAR

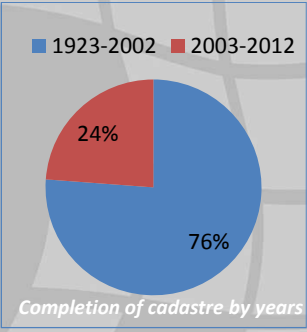


COMPLETION OF CADASTRE

Cadastral works of 12,319 units have been completed within the framework of “Completion of the Establishment Cadastre Project” (2003 – 2012)


TKGM has been used institutional opportunities as well as service procurement from private sector which financed by World Bank, **ARIP Project**.

Project came 2nd place among 226 project in “T.C. Prime Ministry Effective Source Use in Public Sector and Cost Reduction Contest”



Year Range	Percentage
1923-2002	76%
2003-2012	24%


Completion of cadastre by years




168th YEAR

RENOVATION OF CADASTRE

LAND REGISTRY AND CADASTRE MODERNIZATION PROJECT



135 million Euros provided by the World Bank in order to increase the effect and quality of land registry and cadastre services came into effect on August 13, 2008 after it was published in the official gazette no: 2008/13886. Project is active.




168th YEAR

COMPONENTS OF LRCMP

Project has 5 components.



- C1 • Renewal and Update of Land Registry and Cadastre
- C2 • Service Improvement
- C3 • Human Resources and Institutional Development
- C4 • Property Valuation
- C5 • Project Management



168th YEAR

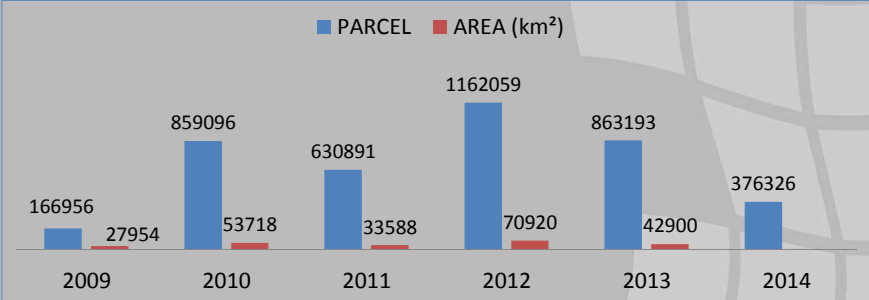
C1: RENEWAL AND UPDATE INTERNALIZED METHODOLOGY

Modernization & Standardization & Serving



168th YEAR

C1: RENEWAL AND UPDATE – STATISTICS





Year	PARCEL	AREA (km ²)
2009	166956	27954
2010	859096	53718
2011	630891	33588
2012	1162059	70920
2013	863193	42900
2014	376326	


Totally;


- 3,682,195 of parcel renovation (*targeted 3,100,000*)
- 229,080 km² of base maps (*targeted 140,000 km²*)

were produced between 2009 – 2013.




168th YEAR

 **C1: RENEWAL AND UPDATE – RESULT**



After renewal: Conformance between map and the land



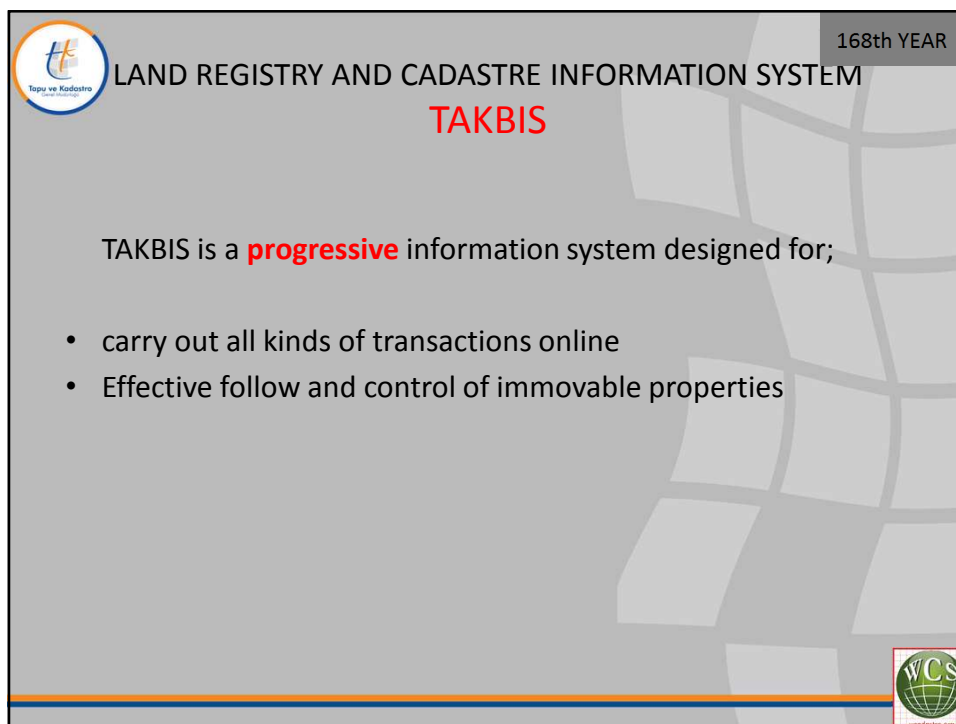
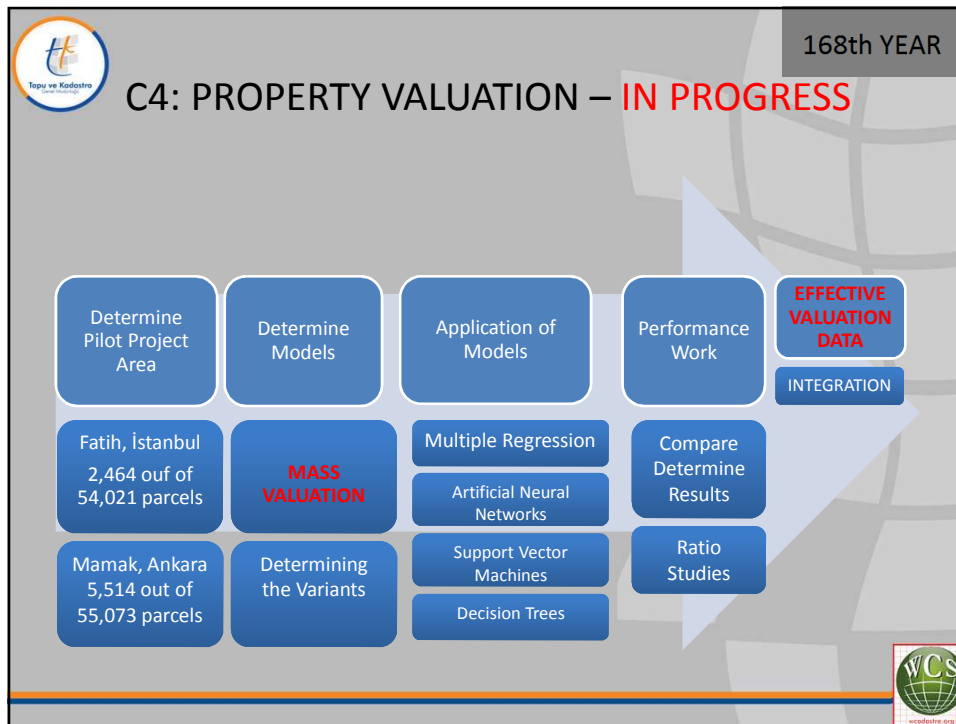
168th YEAR

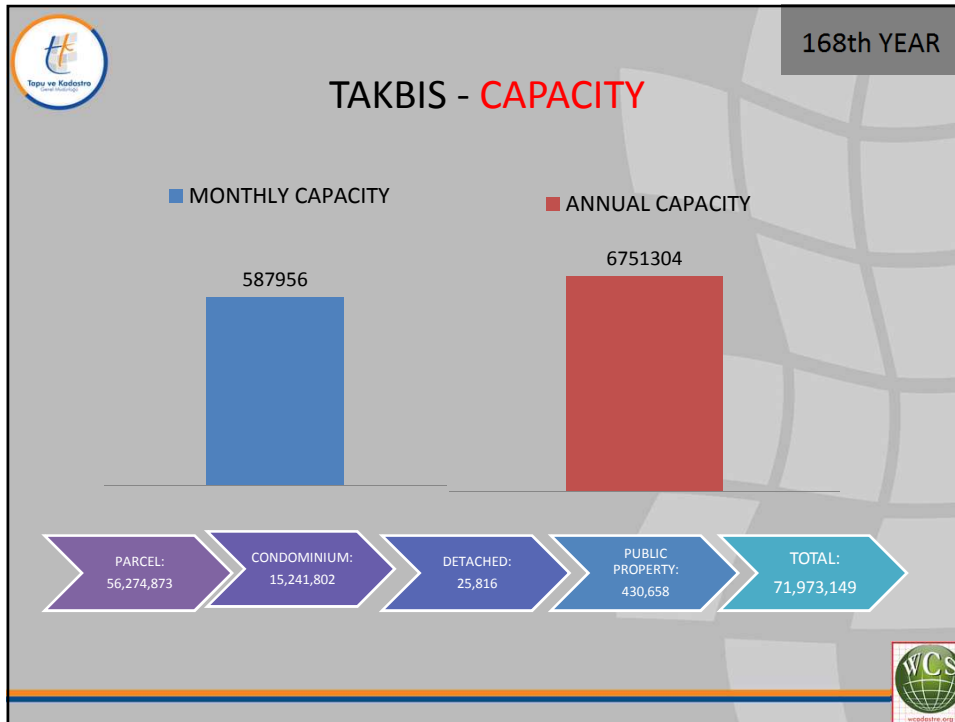
 **C2: SERVICE IMPROVEMENT – MODEL OFFICE**



Model office design and its construction in Bursa







168th YEAR

SPATIAL PROPERTY SYSTEM MEGSIS


MEGSIS is a web-based application software; harnessing title deed and cadastral datas. It has 4 significant phases;

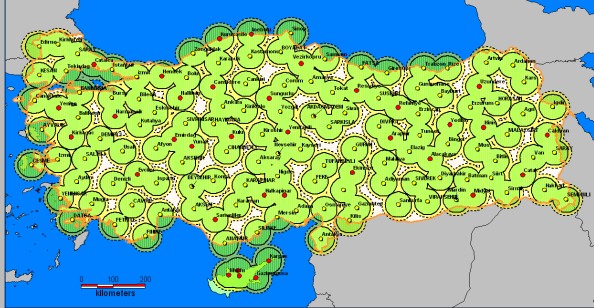
- Web-based application software
- Map services in int'l standards
- E-State map services
- Orthophoto services

Users can be display datas integrated with several choices of layers like orthophotos, google earth, thematic maps etc.

WCS


168th YEAR

 Turkish National Permanent G.N.S.S. Network
TUSAGA – Active (CORS)





TUSAGA- Active System provides map and location information(coordinates) about any place and any time with the centimeter accuracy.

System is made up of 146 permanent GNSS stations.



168th YEAR


 PHOTOGRAMMETRIC WORKS - **CAPACITY**




Data Bank

Capability of orthophoto base map production:


70 thousands square kilometers in a year.




168th YEAR



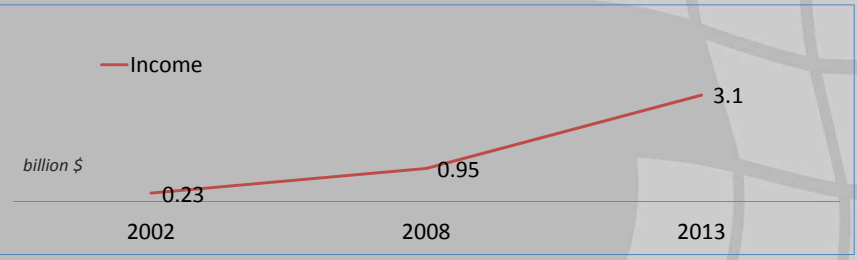
TODAY AND TOMORROW



168th YEAR



RESULTS – IN ECONOMY



Year	Income (billion \$)
2002	0.23
2008	0.95
2013	3.1

Increased by **1350%** in last decade. *in line with national economy*

