

## ROLE OF PRIVATE SURVEYORS IN CADASTRE: THE TURKISH CASE

**Yunus KONBUL**  
[yunus.konbul@ikc.edu.tr](mailto:yunus.konbul@ikc.edu.tr)

**Assoc. Prof. Dr. Mehmet ÇETE**  
[mehmet.cete@ikc.edu.tr](mailto:mehmet.cete@ikc.edu.tr)


**Izmir Katip Celebi University**

The World Cadastre Summit, Congress & Exhibition  
April 20-24, 2015, Istanbul, TURKEY



## This Presentation Will Tell You

- Who performs cadastral services
- Types of cadastral services in Turkey
- Expansion of private surveying companies
- The need of «licensed» surveyors



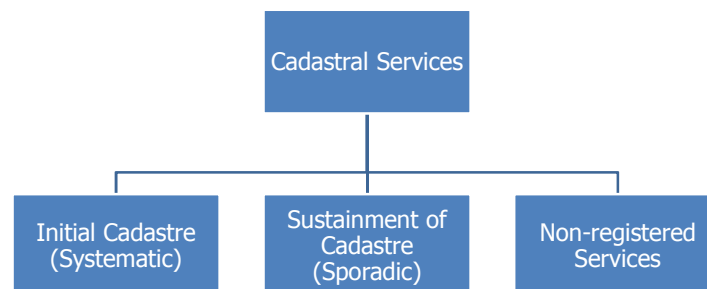
## Who Performs Cadastral Services in the World?

Involvement	Number of Countries	Percentage
Public	11	26%
Private	19	44%
Public & Private	13	30%

Statistics of involvement types in cadastre in 47 countries in the world ([www.cadastraltemplate.org](http://www.cadastraltemplate.org))



## Categories of Cadastral Services



Categories of cadastral services in Turkey



## Main Services of Sustainment of Cadastre

- Subdivision of parcels
- Consolidation of parcels
- Development plan implementations
- Establishment of easements
- Changing land-use types
- Renewal of cadastre
- and others

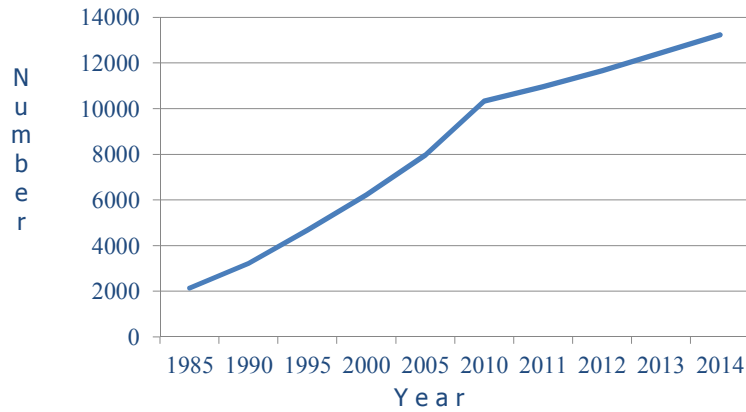


## Non-registered services

- Boundary surveys
- Producing title plans
- Providing technical information
- and others



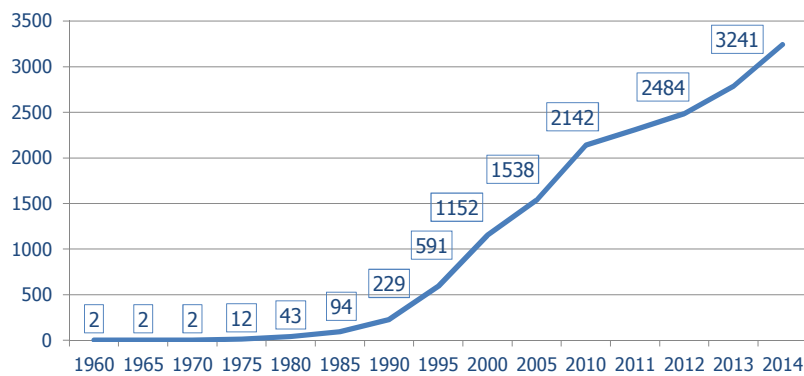
## Number of Registered Surveyors at the CSCE



Number of Surveyors  
(provided by the CSCE)

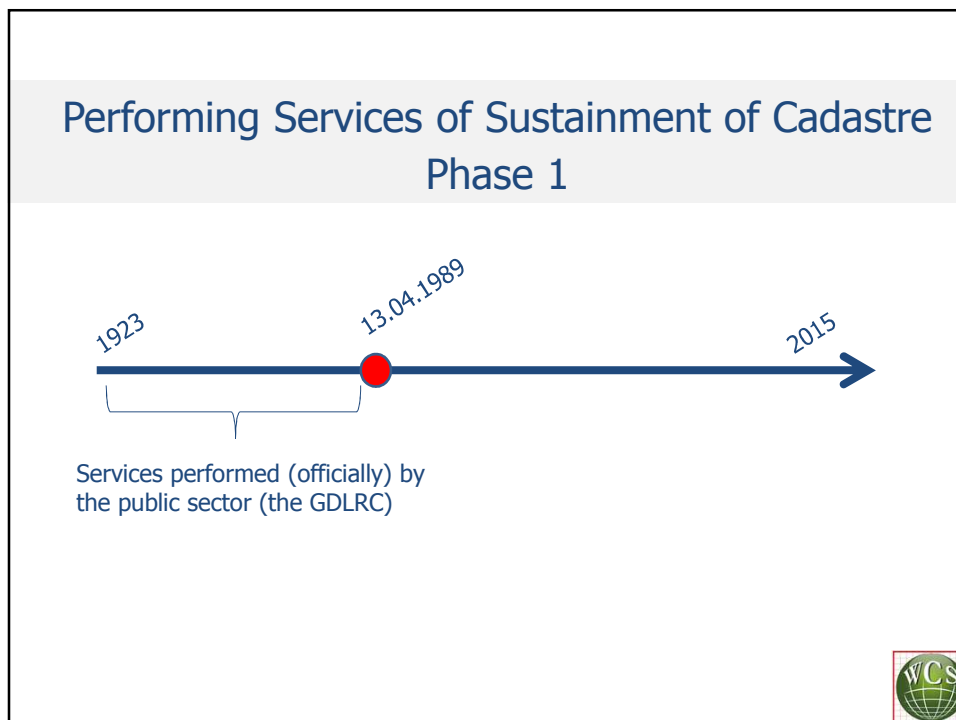
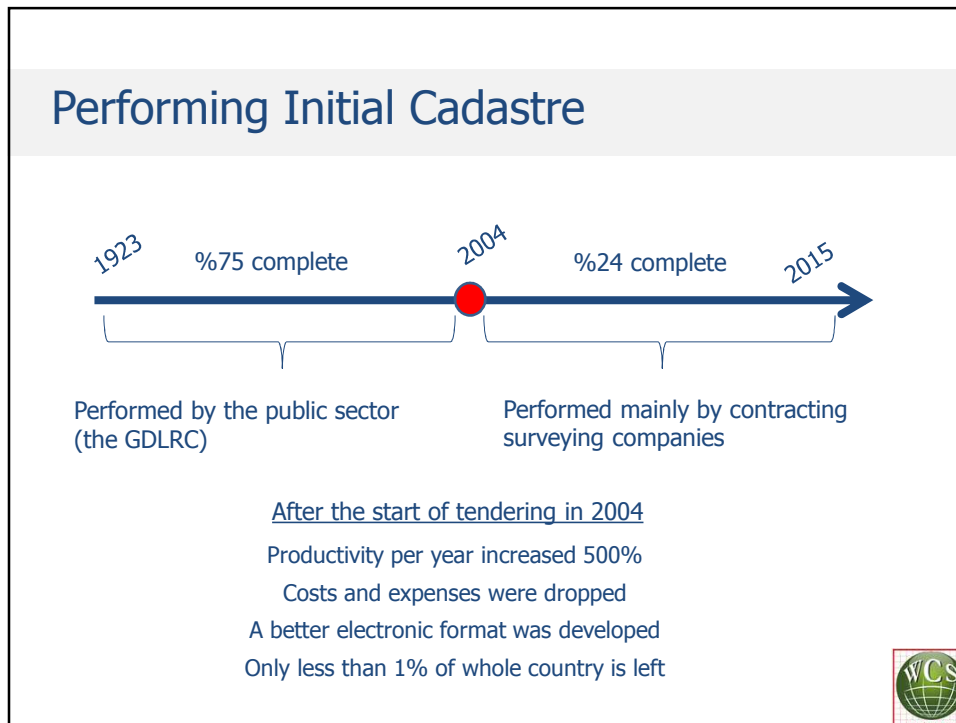


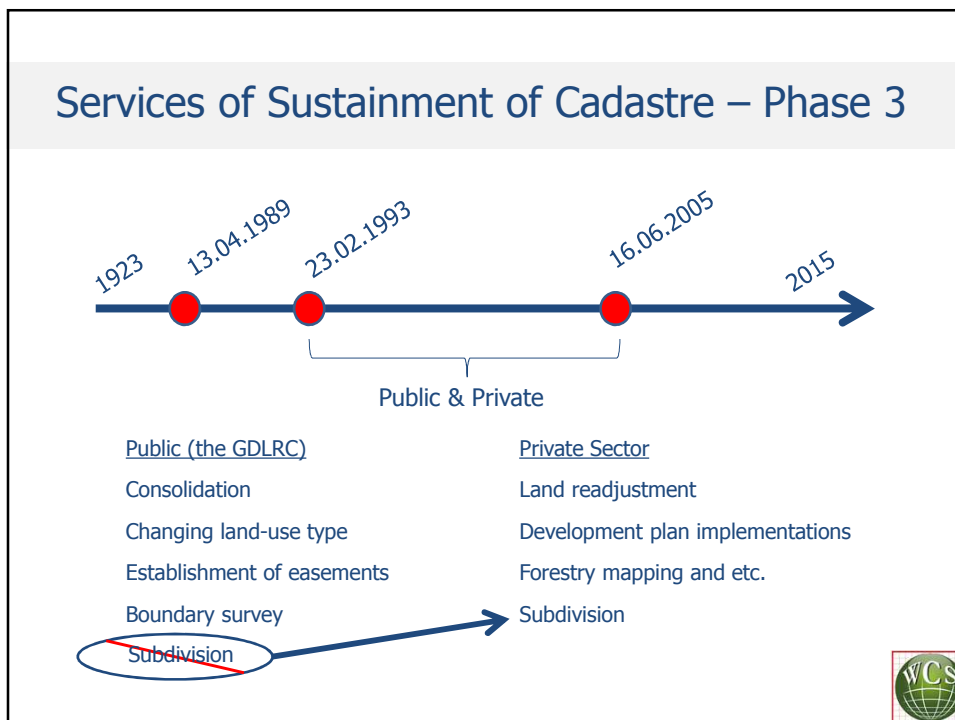
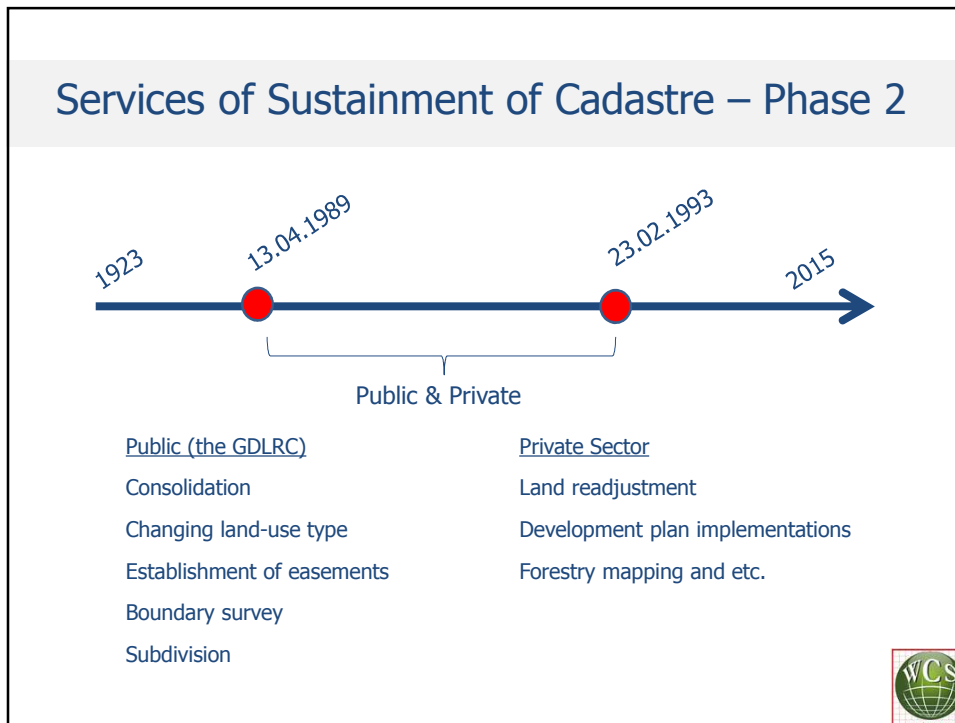
## Number of Surveying Offices & Companies



Number of Private Surveying Offices and Companies in Turkey  
(provided by the CSCE)







## The Emergence of LOSCs (LIHKAB)

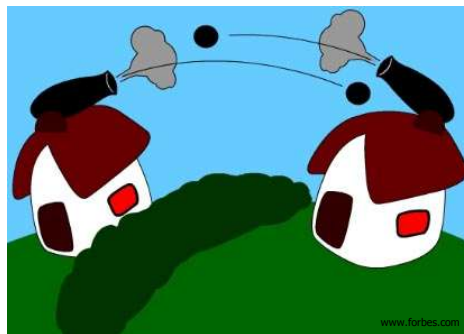
Why didn't the GDLRC leave it all to the private surveying offices?

And the GDLRC inspects all the works anyway?

Why were licensed surveying offices (LOSCs) really needed?



## The Emergence of LOSCs (LIHKAB)



Boundary disputes!



Almost all cadastral services require inspection  
of the GDLRC

But, boundary surveys do not!



## When Boundary Disputes Occur

«Conflict of interest» of private surveyors of the  
disagreeing parties

People recognize boundary surveys of the GDLRC as  
«legal» or «official»

Judges recognize the GDLRC as the ultimate authority  
for boundary surveys





How do you privatize a public service and still  
provide a public legitimacy attached to it?



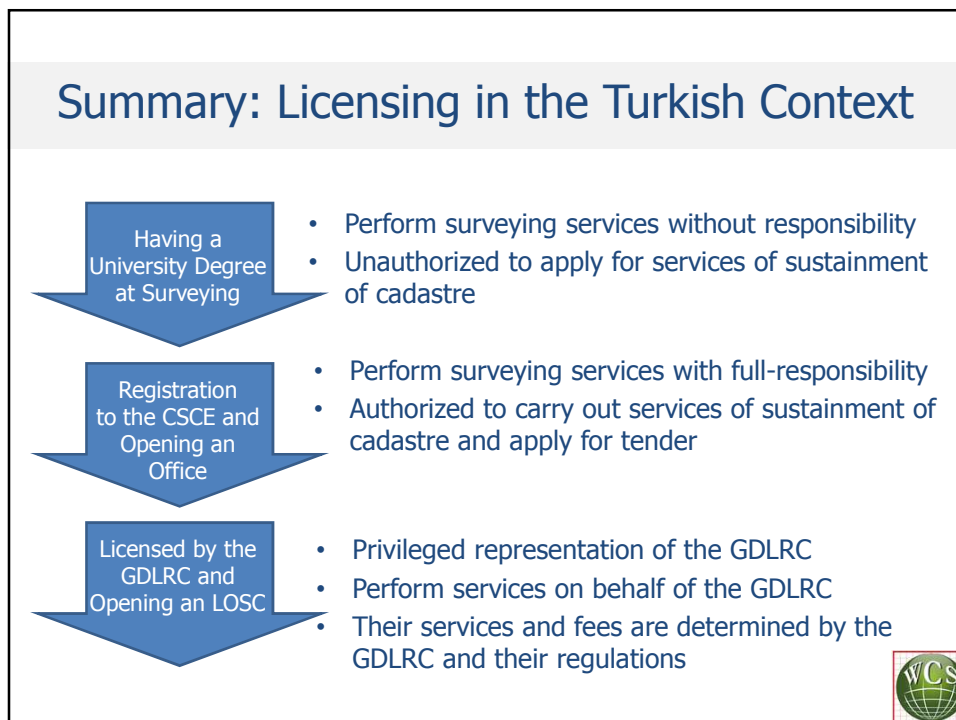
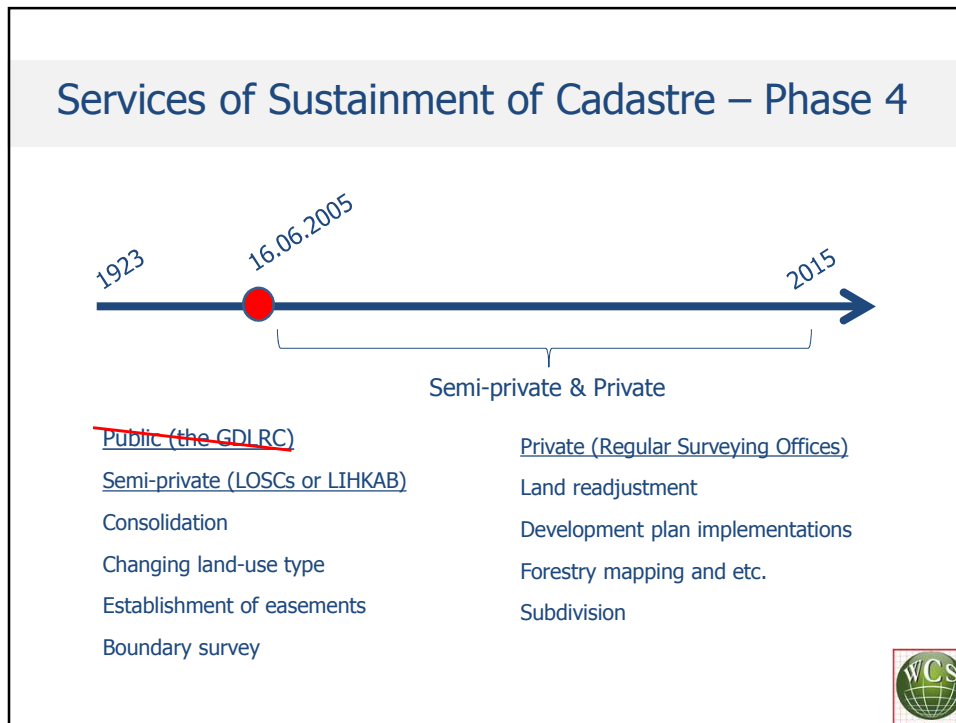
## The Act concerning Licensed Surveying and Cadastre Engineers and Offices 2005

Licensing examination

Work experience of minimum 5 years

Today 195 LOSCs all around Turkey







**Thanks!**

**Yunus KONBUL**  
[yunus.konbul@ikc.edu.tr](mailto:yunus.konbul@ikc.edu.tr)

**Assoc. Prof. Dr. Mehmet ÇETE**  
[mehmet.cete@ikc.edu.tr](mailto:mehmet.cete@ikc.edu.tr)

**Izmir Katip Celebi University**  
**Geomatics Engineering Department**  
**Izmir, TURKEY**

